

Serengeti

MADE IN SOUTH AFRICA



silver cfe



Belgotex floors®
A WORLD OF CHOICE

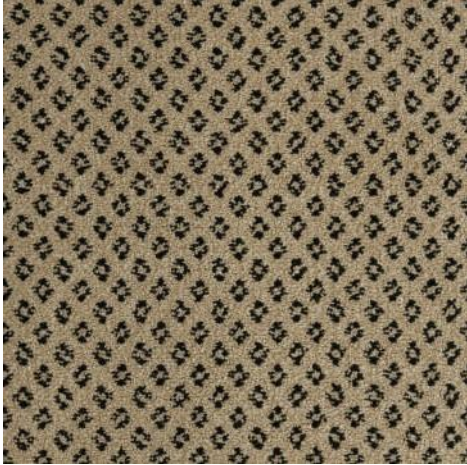
فیکسٹ دیزاین
FIXIT DESIGN
CARPET AND CURTAINS TRADING L.L.C

Web: fixitdesign.ae
Phone: [+971554722980](tel:+971554722980)
Email: info@fixitdesign.ae



Serengeti


MADE IN SOUTH AFRICA



RiverSand 002



Phinda 005



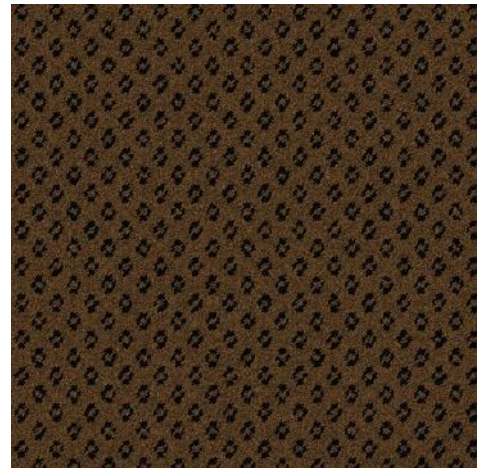
Wild Cheetah 006



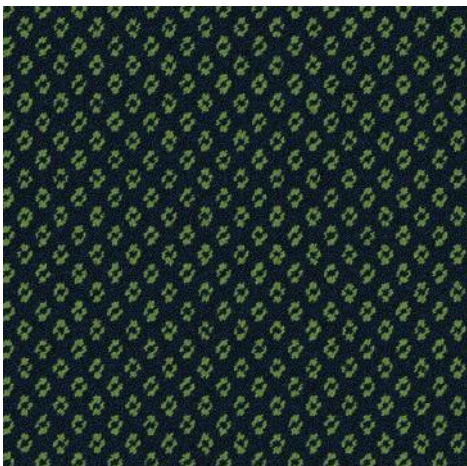
Mamba 009



Tembe 007



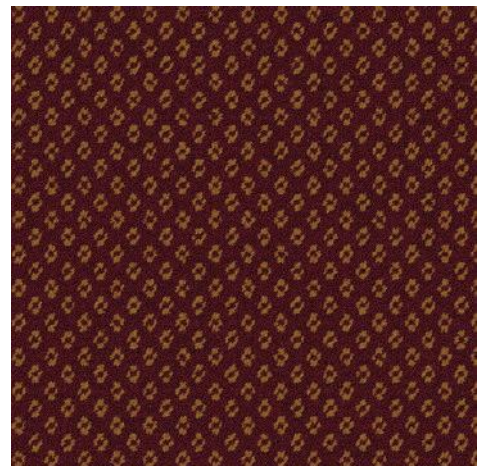
Zazu 004



Kimba 008



Nala 003



Sarabi 001

PRODUCT SPECIFICATIONS



WEAVE TYPE	Tufted Cut Pile
FIBRE YARN	100% Stainproof SDX
GAUGE	1/10th
STITCHES	46
PILE HEIGHT	7.0 mm
TOTAL CARPET THICKNESS	10.0 mm
TOTAL PILE WEIGHT	1200 g per sq m
TOTAL MASS	2622 g per sq m
CARPET WIDTH	4.00 m
FIRE INDEX CLASS	Cfl s1 (EN13501-1)
ELECTROSTATIC PROPENSITY	Less than 2.0 kV (ISO 6356 & EN 1307)
VOC TESTED	Pass (GBCSA/GLP)
WEAR CLASSIFICATION	Class 33 (EN 1307) - Heavy Commercial
WARRANTY	15 Year Limited Wear Warranty 5 Year Manufacturer Defect Guarantee

