



TILE

Web: [fixitdesign.ae](http://fixitdesign.ae)

Phone: [+971554722980](tel:+971554722980)

Email: [info@fixitdesign.ae](mailto:info@fixitdesign.ae)

# MAZE



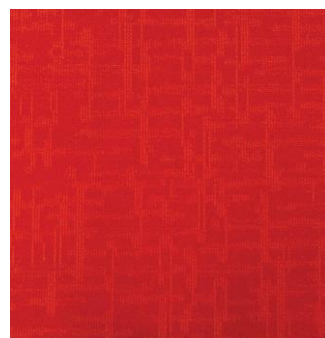
Vanilla

297



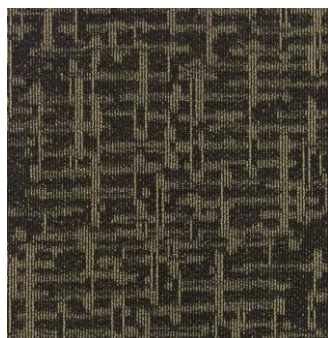
Beige

397



Red

527



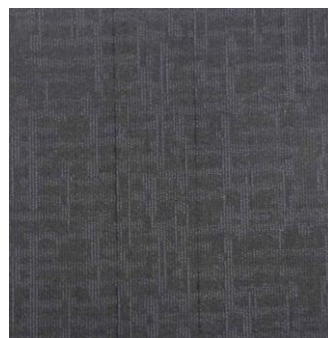
Charcoal Brown

947



Black

887



Blue

757



Steel Grey

447

# MAZE



## SPECIFICATIONS

Construction	VLOC
Product	MAZE
Pile Fiber Composition	100% Nylon (Polyamide 6)
Yarn Type	BCF
Dye Method	Solution Dyed
Pile Weight	750 g/m <sup>2</sup>
Number of Tufts	260700/m <sup>2</sup>
Tufting Gauge	1/12"
Primary Backing	Non-Woven
Secondary Backing	StableShield - 100% Vinyl
Optional Backings	Recova-PU Cushion, EcoShield - 100%
Tile Size	50 cm x 50cm
Pile Height	3.5 mm / 5.0 mm
Total Tile Height	7.0 mm
Pile Treatment	INVISTA Anti-Soil treatment, Anti-Microbial (Optional)
Recommended Installation	Monolithic or Quarter Turn

## Performance Specifications

Wear Classification	Heavy Contract	
VOC Emission	ASTM D5116-06	<0.5 mg/m <sup>2</sup> /hour (CRI GLP)
Flammability	ASTM D-2859//FF 1-70//16CFR 1630	Pass 8/8
Critical Radiant Flux	ASTM E648-08	Class 1
Static Propensity	ISO 6356	0.2 KV
Color Fastness	AATCC/16	5/5 on Grey Scale.
Thermal Resistance	ISO 8302	.04 m <sup>2</sup> /KW
Impact Sound Insulation	ISO 140-8	23dB
Sound Absorption Level	EN ISO 11654	w: 0.15(H)
Soiling Propensity	ASTM D 6540-00	4
Dimensional Stability	EN 986	< 0.20%
Castor Chair Test	DIN 54324	R ≥ 2.4
Smoke Density	EN ISO 9239-1:2002	<450

# ckDG2psqLeg



WEAR STABILITY  
CASTOR CHAIR COMPATIBILITY  
ANTISTATIC  
LIGHT FASTNESS



Quarter Turn



Monolithic

