



BY SWISS KRONO GROUP



# GLAMOUR

LAMINATE FLOORING



[www.blauer-engel.de/uz/78](http://www.blauer-engel.de/uz/78)



PANEL : 1220 x 610 x 8mm | Box 4 panels | 2.077 m<sup>2</sup>



PANEL : 644 x 310 x 8mm | Box 10 panels | 1.996 m<sup>2</sup>



Web: [fixitdesign.ae](http://fixitdesign.ae)

Phone: [+971554722980](tel:+971554722980)

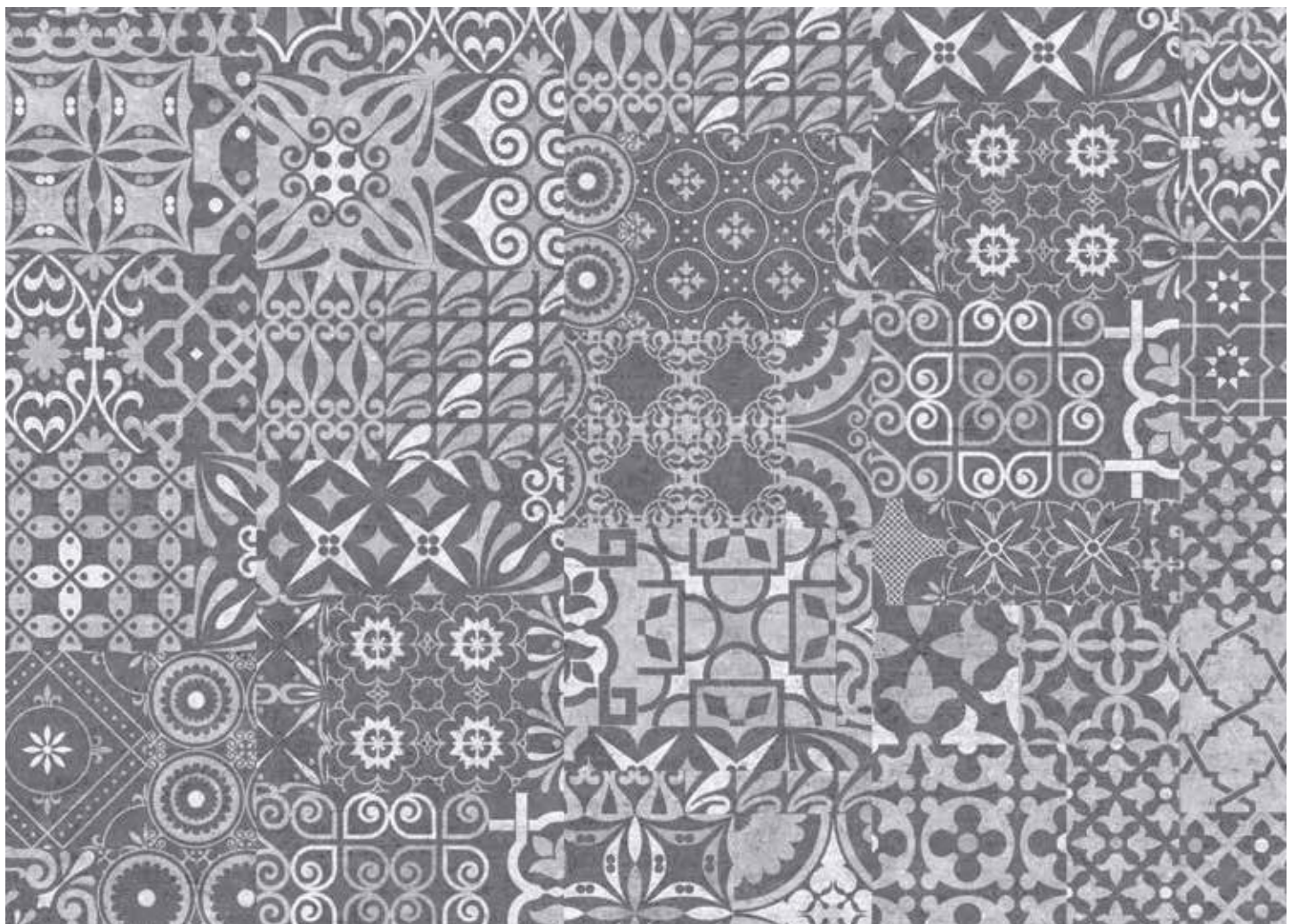
Email: [info@fixitdesign.ae](mailto:info@fixitdesign.ae)





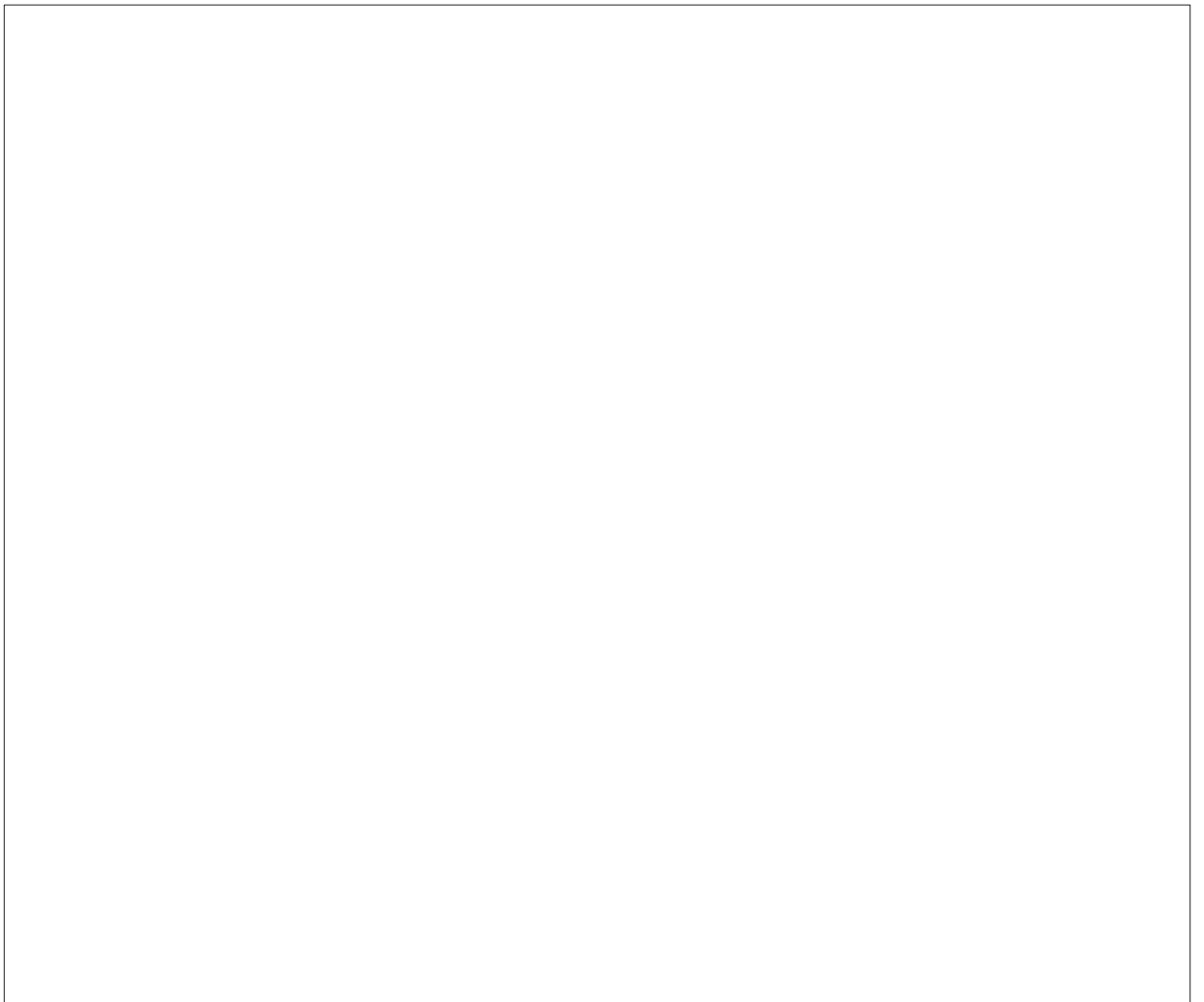
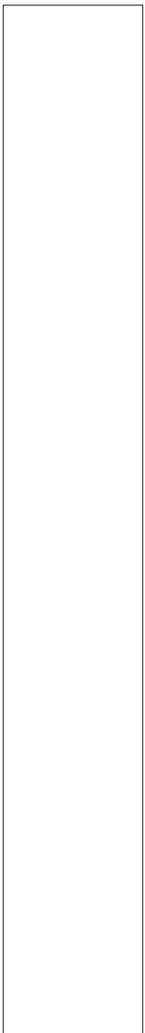


**Palazzo Matt - Q 004 MF (644 x 310mm)**





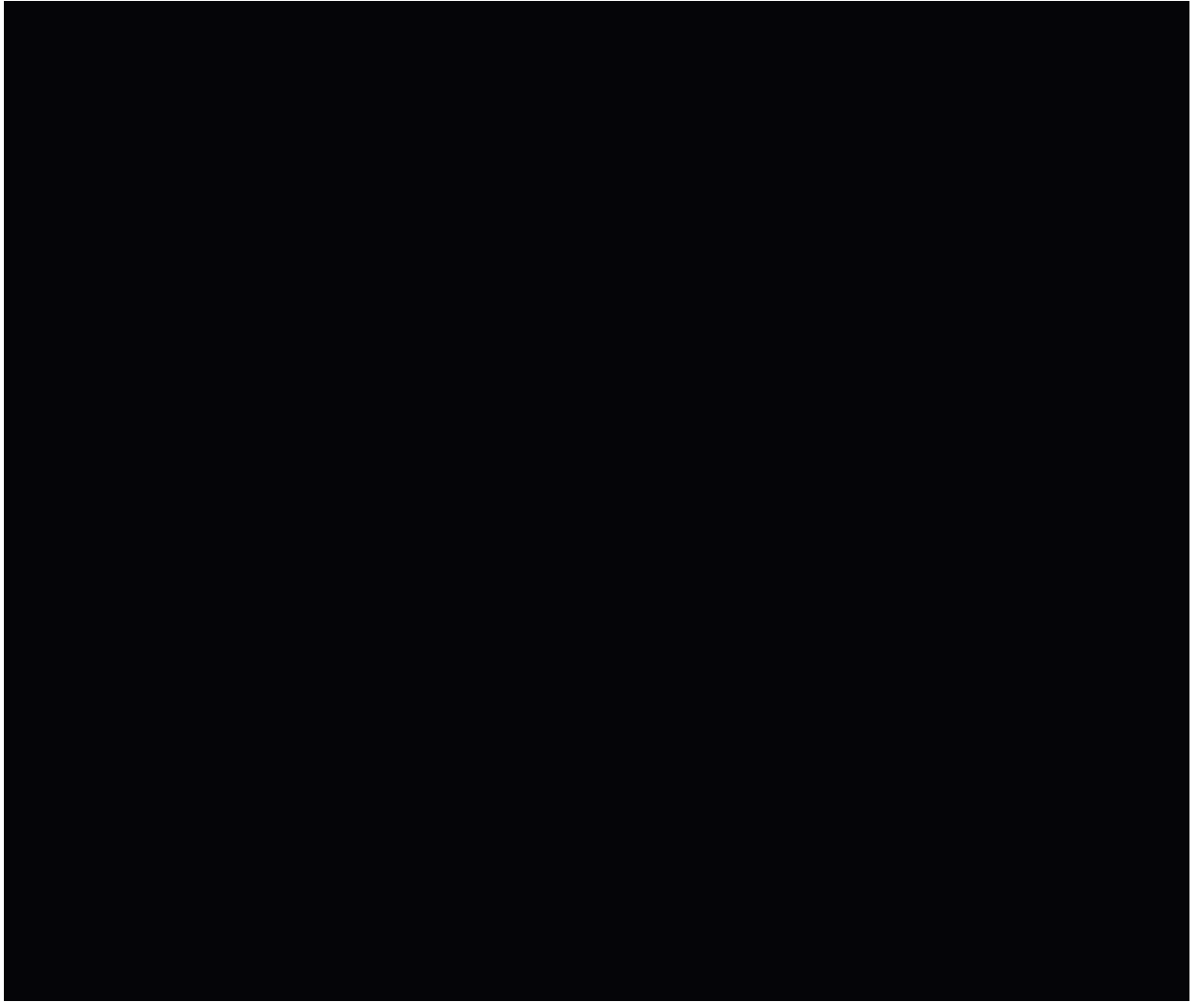
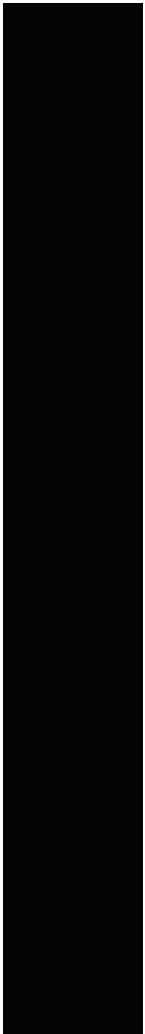
## White Glossy - D 2935 HG







**Black Glossy - U 190 HG**



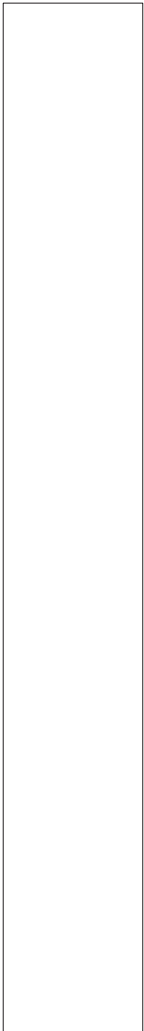


**Grey Glossy - D 3550 HG**



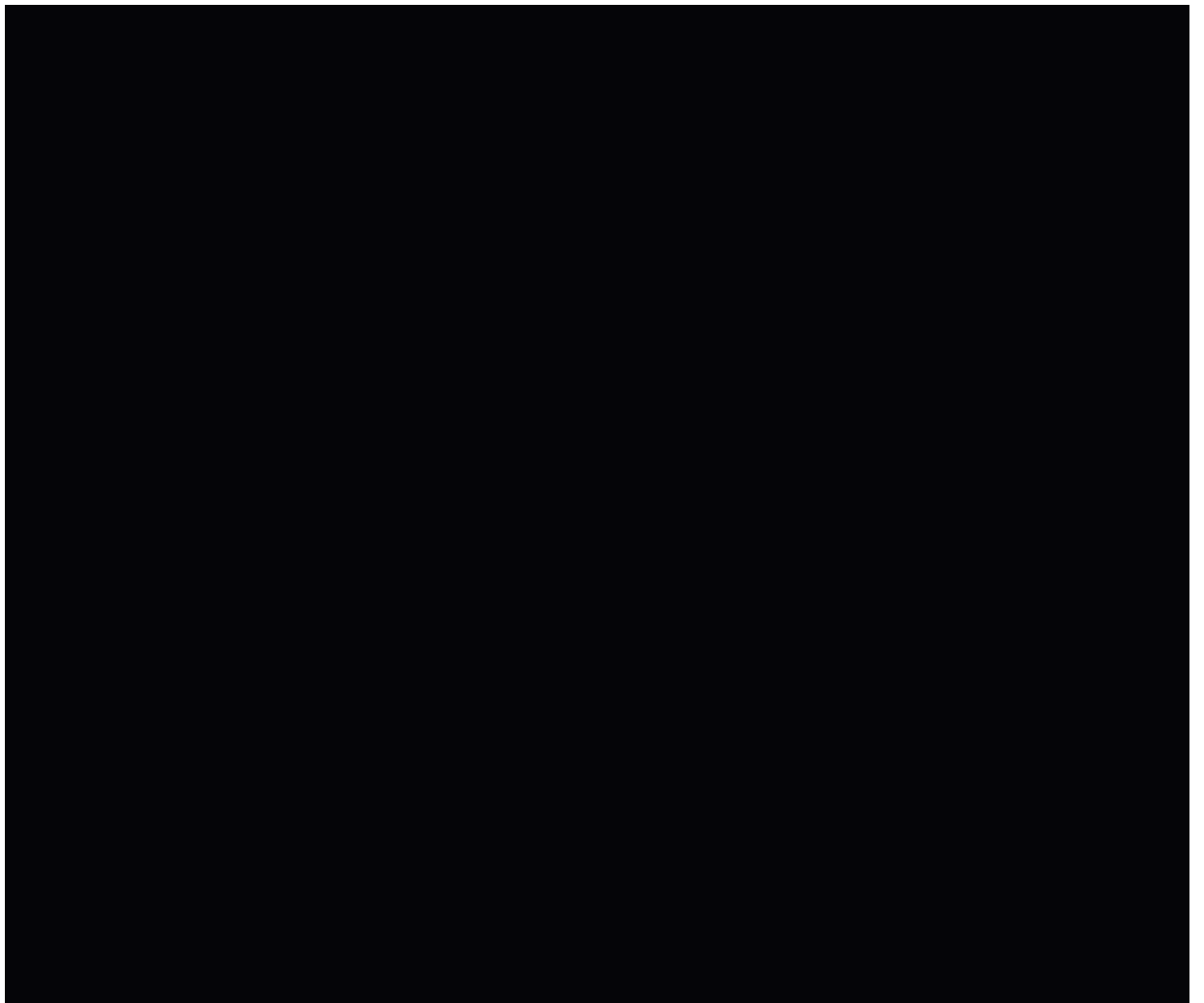
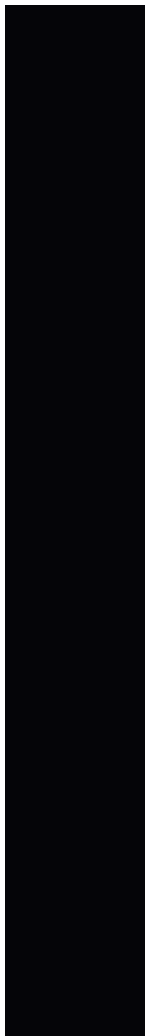


**White Matt - D 2935 MF**





**Black Matt - U 190 MF**







**Grey Matt - D 3550 MF**







# GLAMOUR

## LAMINATE FLOORING

TEST	CHARACTERISTICS	TEST METHOD
Resistance to abrasion	AC4	EN 13329
Impact resistance	C 1	EN 133329:2006 Appendix F
Resistance to stains	5 (groups 1 and 2) 4 (group 3)	EN 438-2
Behaviour with cigarette burns	Grade 3	EN 438-2
Behaviour during simulation of movement of the leg of a piece of furniture	no visible change when performing the test with leg type 0	EN 424
Thickness swell	≤ 18.0%	EN 13329:2006 Appendix G

PROPERTY	REQUIREMENTS	TEST METHOD
Humidity content at the time of dispatch from the factory	The elements must have a humidity content of 4% to 10%. The humidity content of a delivery must be even at $H_{max}-H_{min} < 3\%$	EN 322
Appearance, surface defects	Minor surface defects as defined in EN 438-5 are permissible	EN 438-2
Behaviour when exposed to scratching	The elements must exhibit, as a minimum, level 3 resistance to scratching in accordance with EN 438-2.	EN 438-2

STRENGTH	THERMAL CONDUCTIVITY (W / (m x K))	OVERALL HEAT TRANSFER COEFFICIENT THERMAL RESISTANCE ((m <sup>2</sup> x K) / W)
8	0.13	0.06

LENGTH	WIDTH	PANEL S PER BOX	m <sup>2</sup> /BOX	BOXES PER PALLET	m <sup>2</sup> / PALLET
1220 mm	610 mm	4	2.977	30	89.310

LENGTH	WIDTH	PANEL S PER BOX	m <sup>2</sup> /BOX	BOXES PER PALLET	m <sup>2</sup> / PALLET
644 mm	310 mm	10	1.996	42	83.849

**GUARANTEE**  
25 Years (private) & 3 Years (commercial)



EPO of the EPLF industry association



# KRONOTEX

BY SWISS KRONO GROUP



**FIXIT DESIGN**  
CARPET AND CURTAINS TRADING L.L.C