

Centra



MADE IN BELGIUM



4m



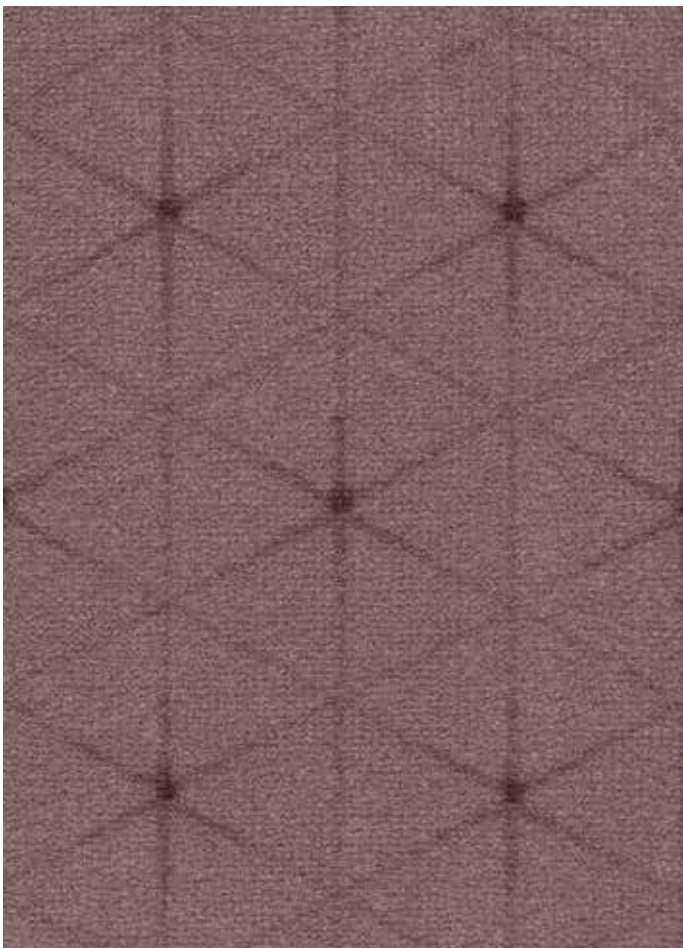
Taupe

40



Mocca

45



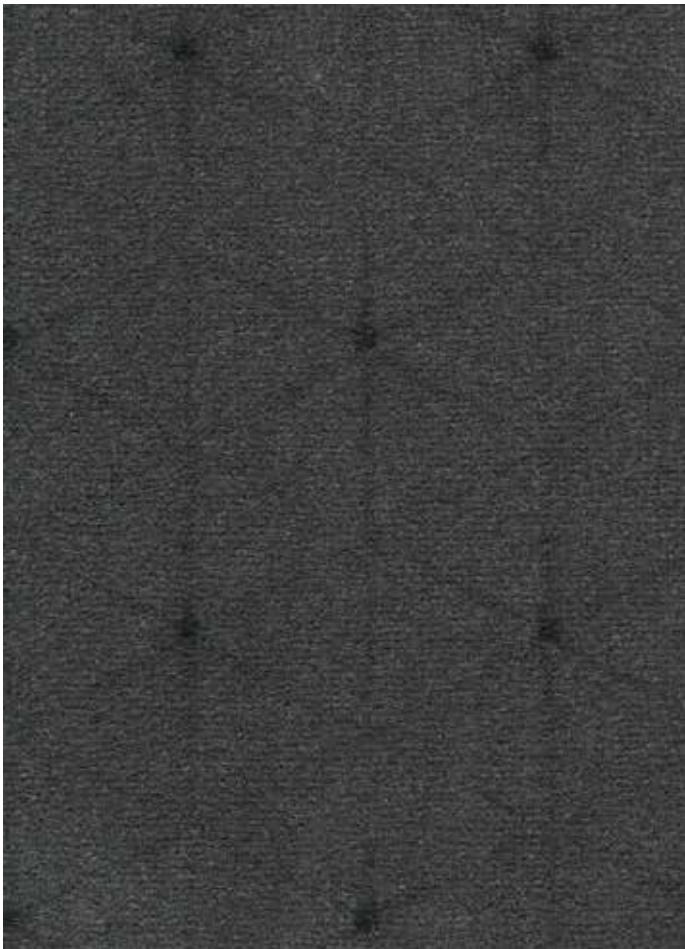
Coral

67



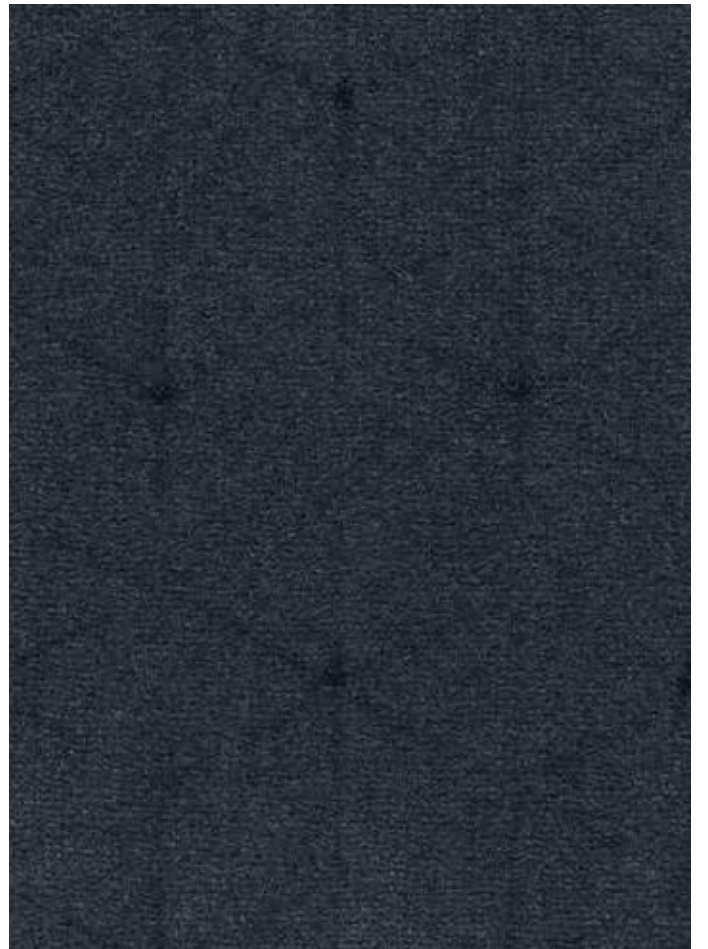
Platina

95



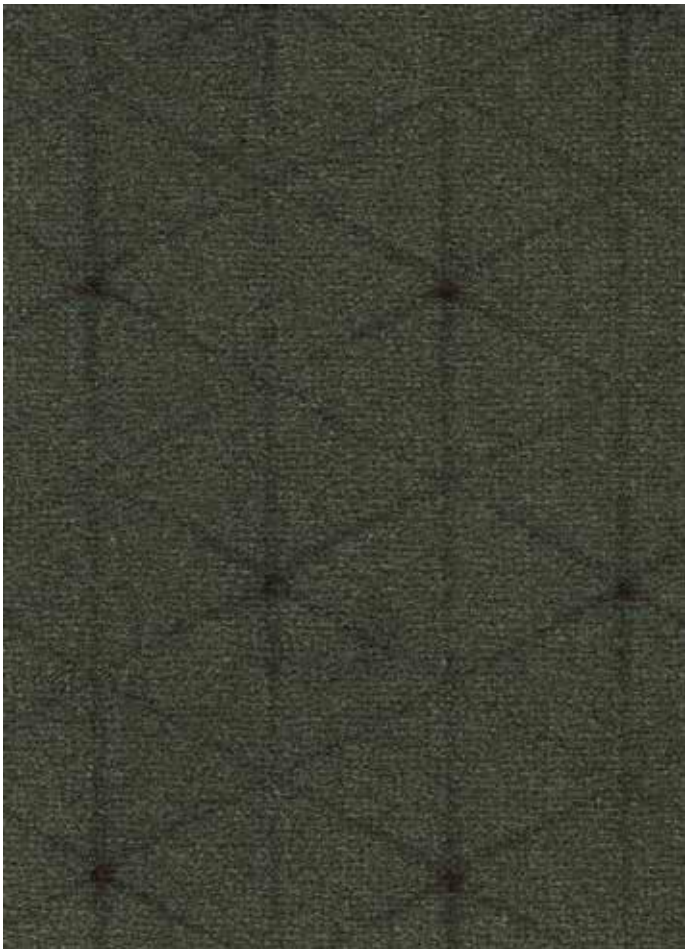
Anthracite

96



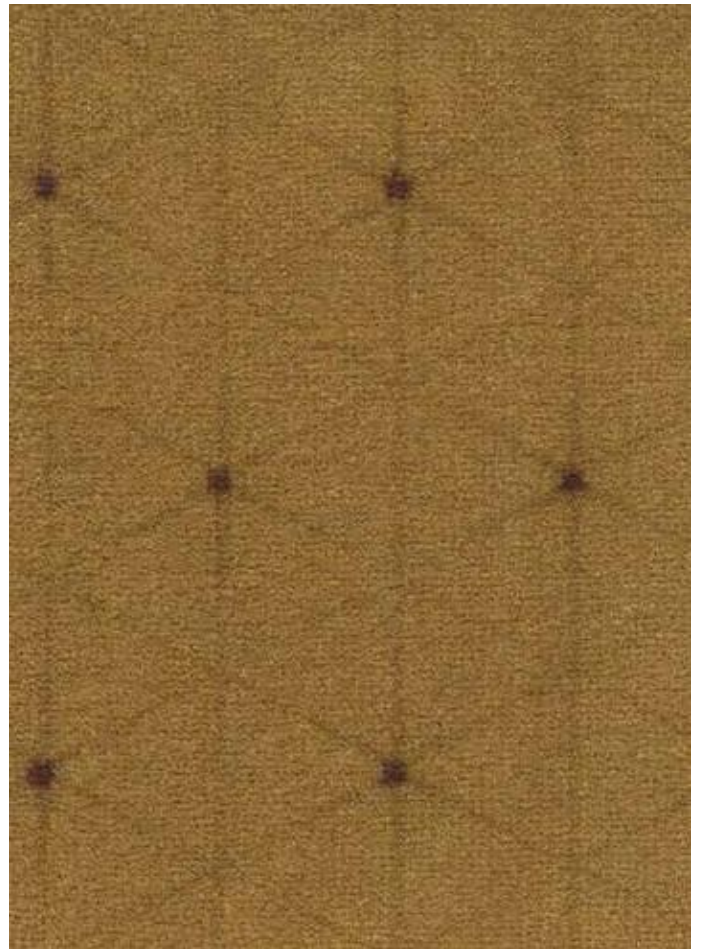
Midnight

78



Forest

24



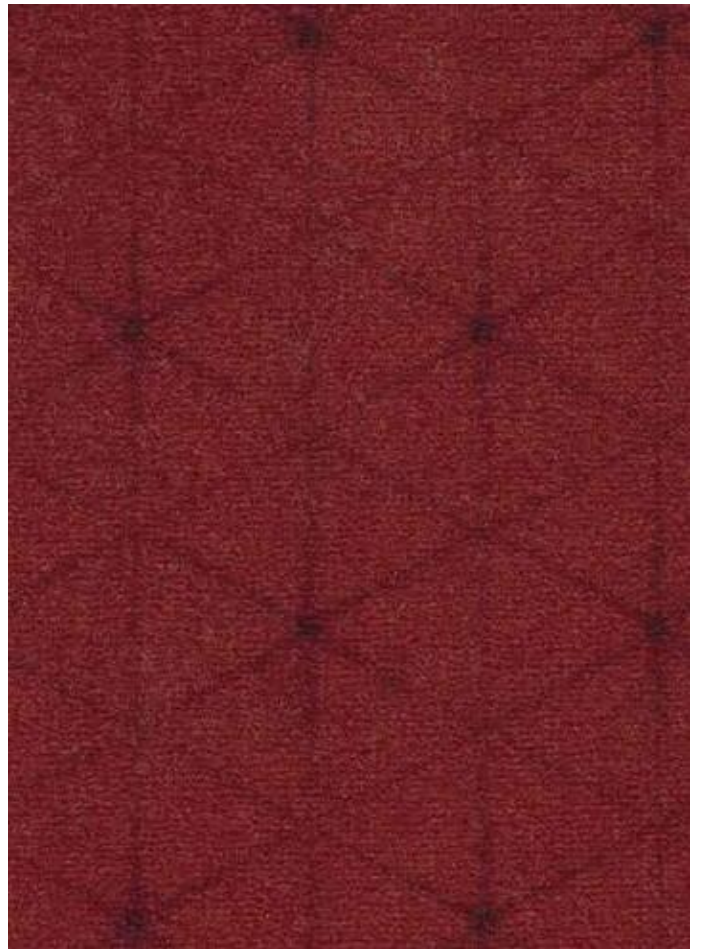
Midas

54



Cognac

80



Cardinal

12



Centra



Velours	100% PA
Dossier	Feltbac
Poids g/m ²	1.000
Épaisseur totale en mm	8,5
Hauteur du velours en mm	7,5
Jauge	1/10
Densité: points/m ²	205.400
Poids total: g/m ²	1.800
Résistance thermique m ² C°/W	0,13
Isolation Phonique	DL _w = 26 dB
Classement feu	Cfl - s1 (17/1781)
	U _p E ₁ C ₀ (04/158-26-00)
Raccord	L/H: 15,5 cm - B/W: 9 cm
DOP	1008#BL0011

DOMAINE D'USAGE

Usage d'habitation : intensive : Séjour, Salle à manger, Circulations, Escaliers, Bureau Privé
 Usage professionnel : normal : Chambre d'hôtel, Boutique, Magasin, Restaurant,
 Salle de Réunion, Circulations, Bureaux, Escaliers

Pile	100% PA
Backing	Feltbac
Pile weight g/m ²	1.000
Total thickness in mm	8,5
Pile height in mm	7,5
Gauge	1/10
Tufts per sqm	205.400
Total weight in g/m ²	1.800
Thermal resistance in m ² C°/W	0,13
Sound absorption	DL _w = 26 dB
Fire Classification	Cfl - s1 (17/1781)
	U _p E ₁ C ₀ (04/158-26-00)
Repeat	L/H: 15,5 cm - B/W: 9 cm
DOP	1008#BL0011

PERFORMANCE

Domestic use : heavy : Living room, Dining room, Entrances, Hallway, Stairs, Study
 Contract use : general : Hotelroom, Boutique, Shop, Restaurant, Conference room,
 Office, Stairs

