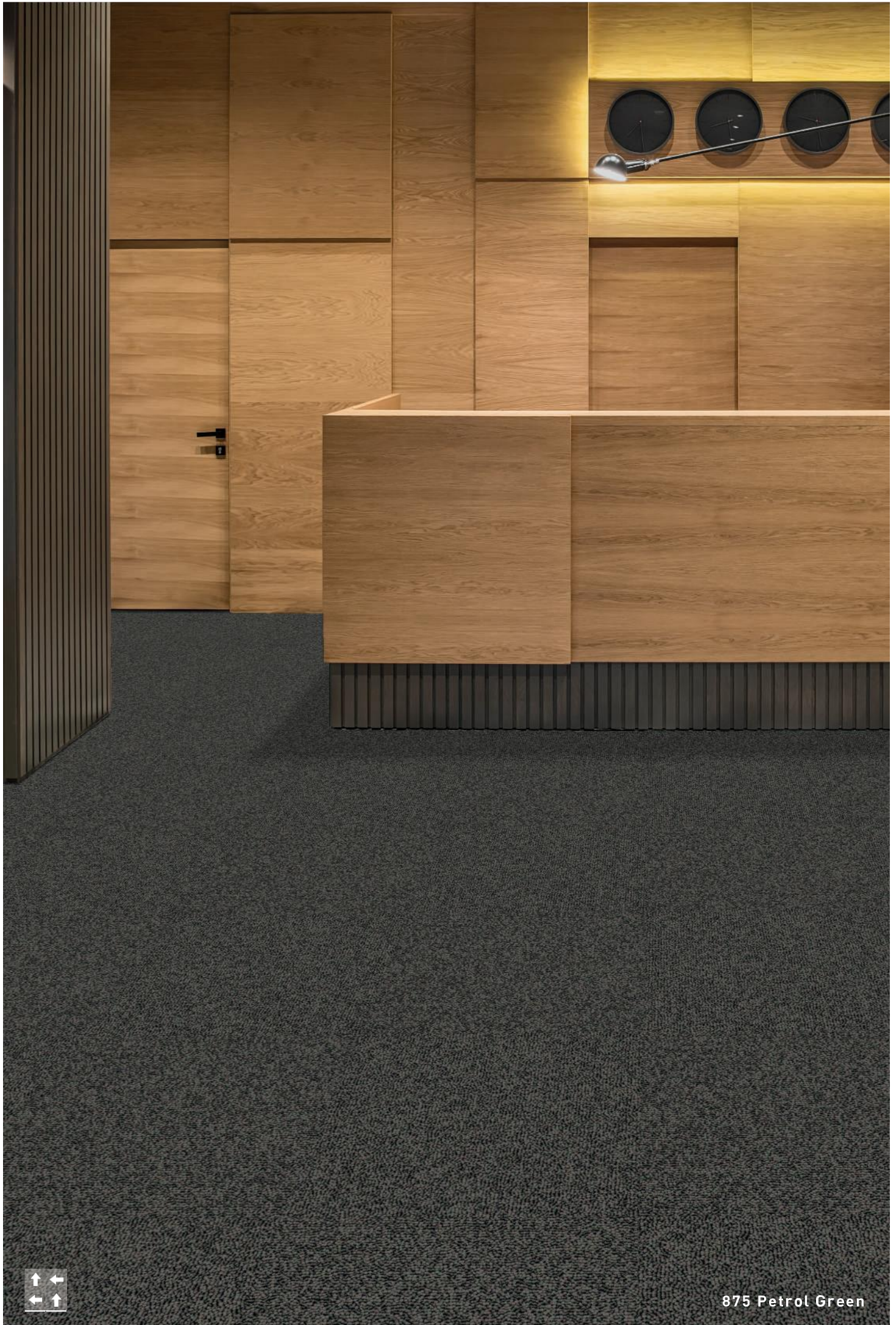


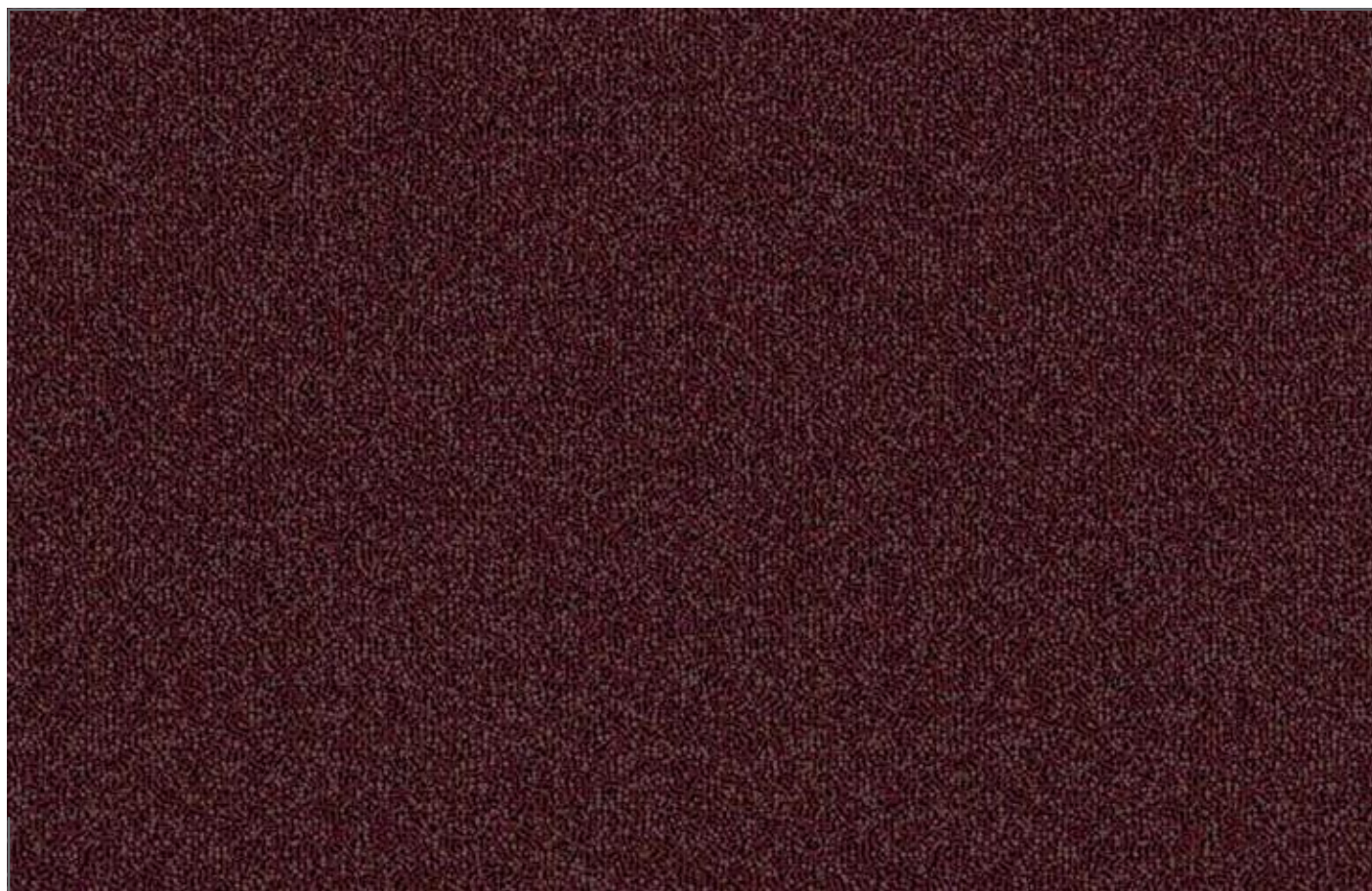
BOSTON

SDN Carpet Tile (50x50cm)

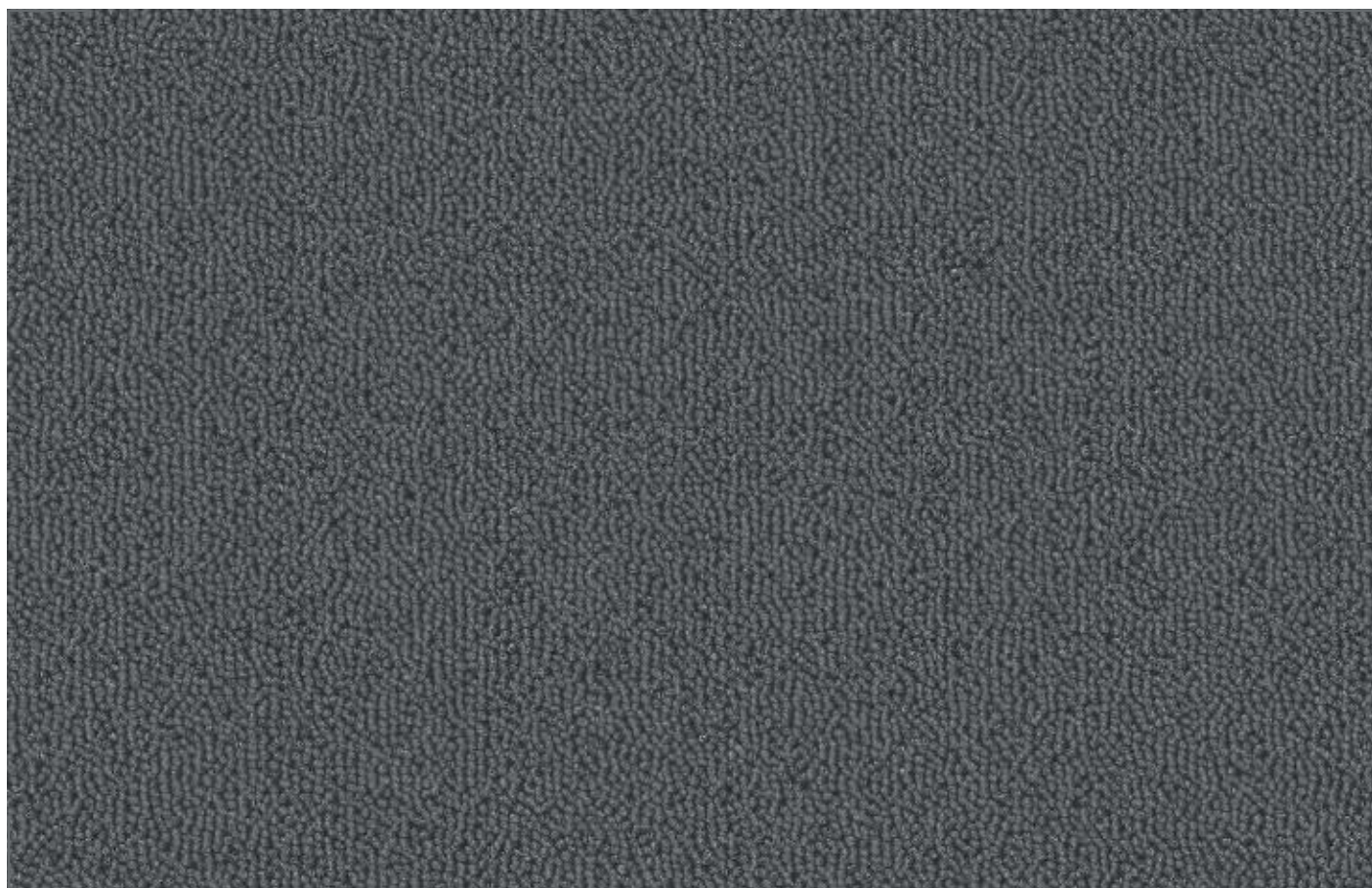




875 Petrol Green



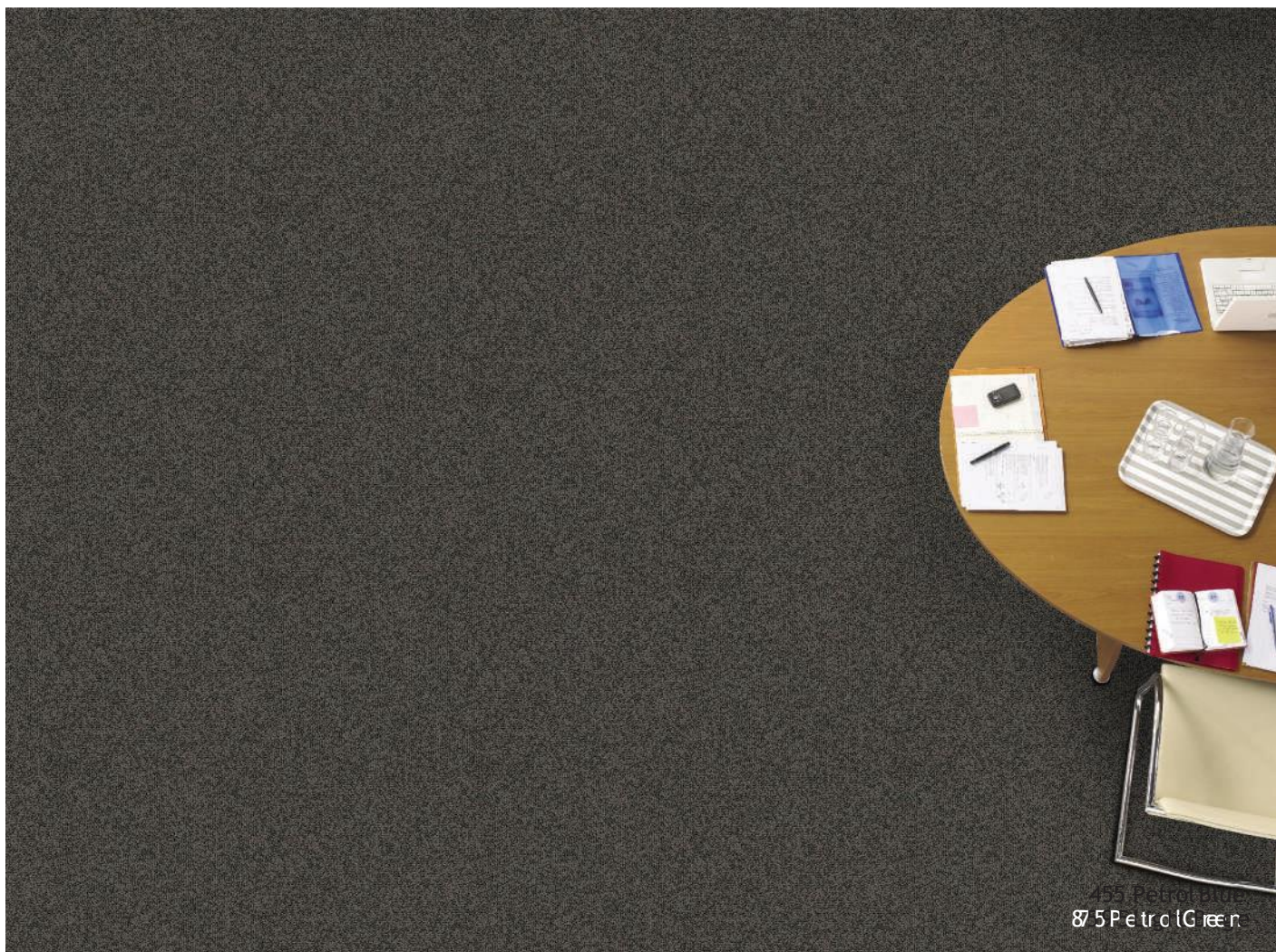
825 Maroon



555 Silver

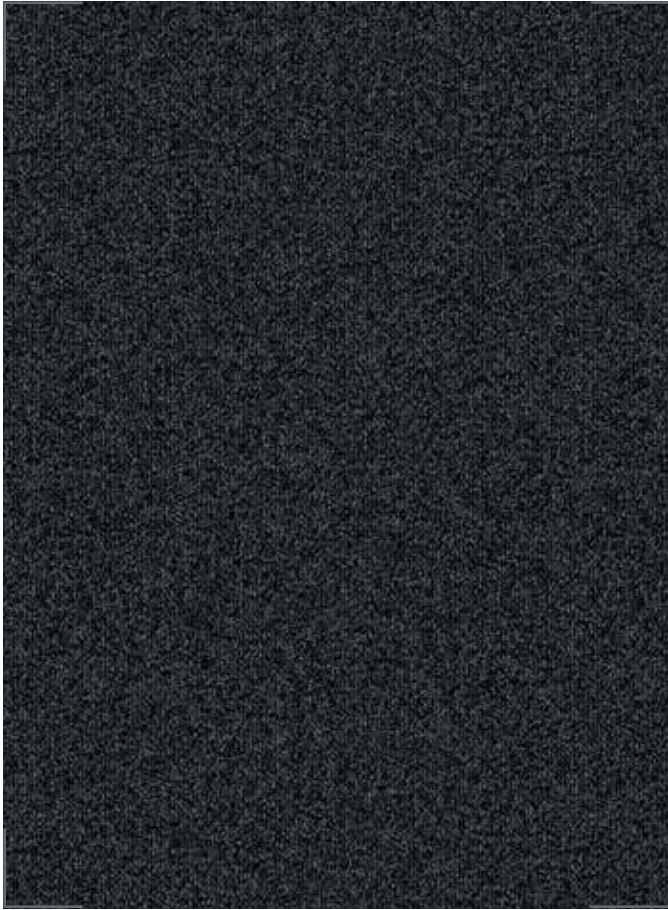


825 Marron



875 Petric Green

BOSTON (Tri-colours)



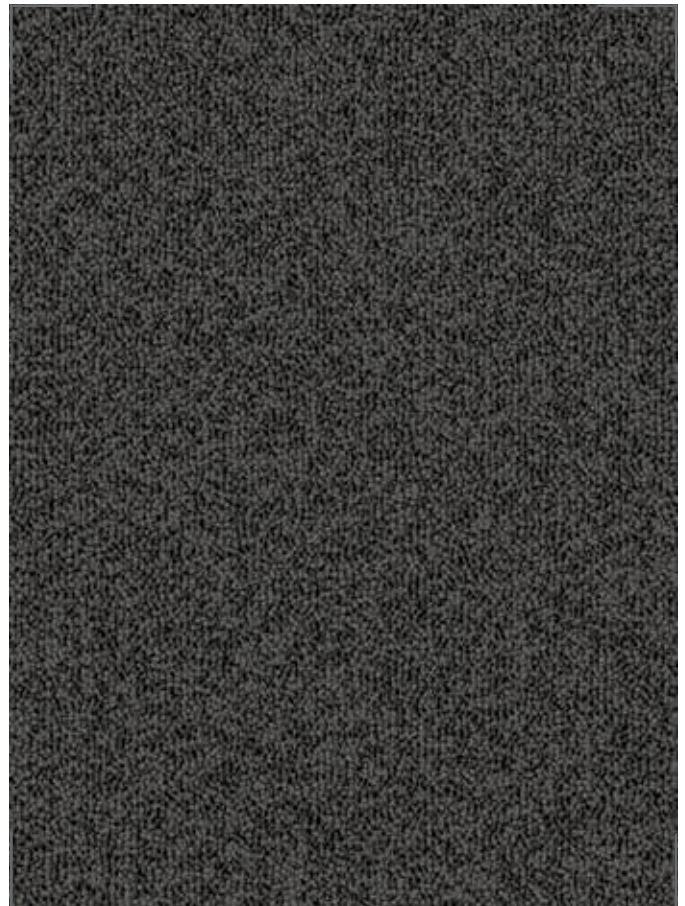
375 Grey



395 Beige



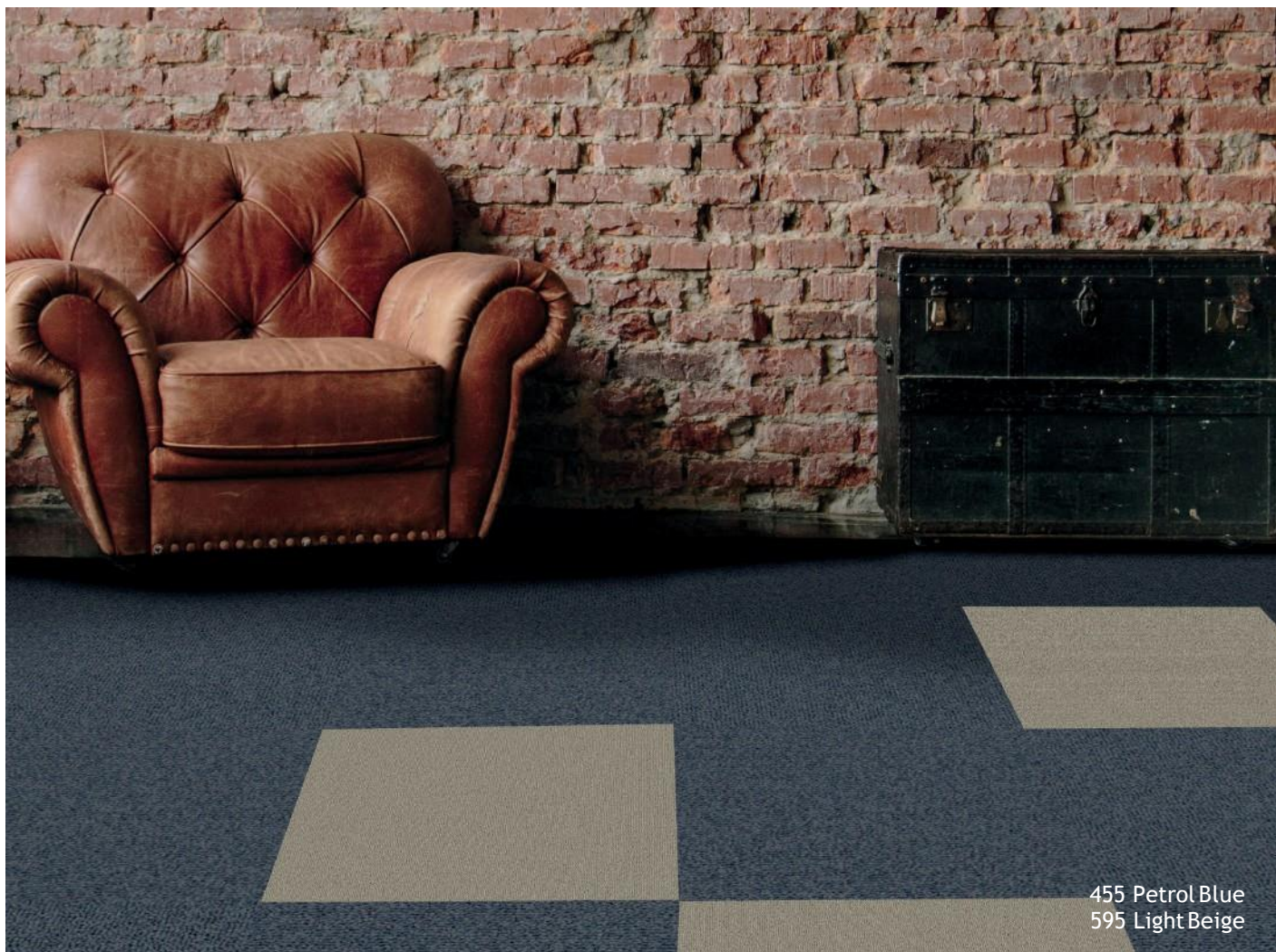
455 Petrol Blue



875 Petrol Green



395 Beige



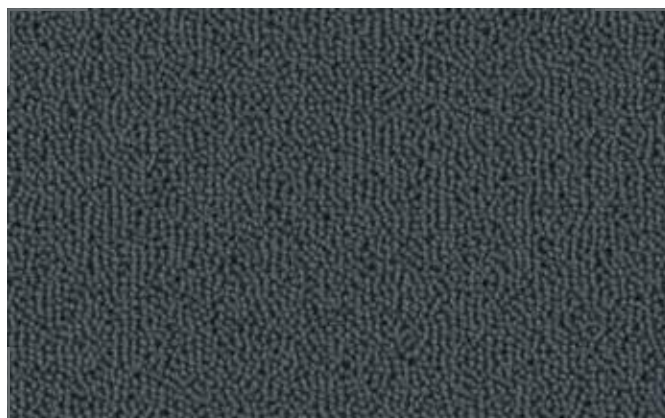
455 Petrol Blue
595 Light Beige

BOSTON (Solid Colours)

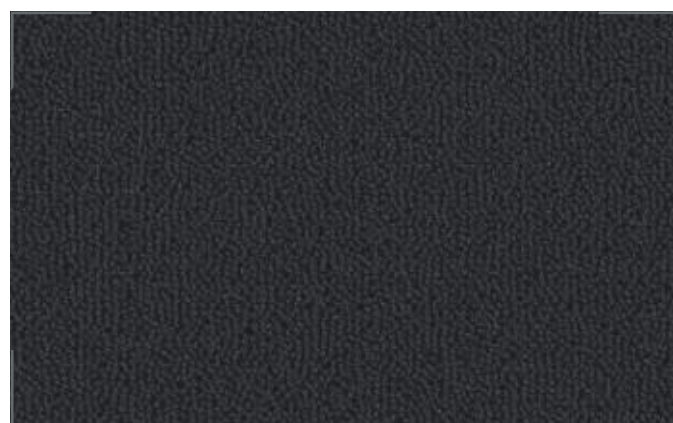
50cm
19.6 in



115 Blue



675 Light Grey



975 Black



465 Light Green



635 Yellow



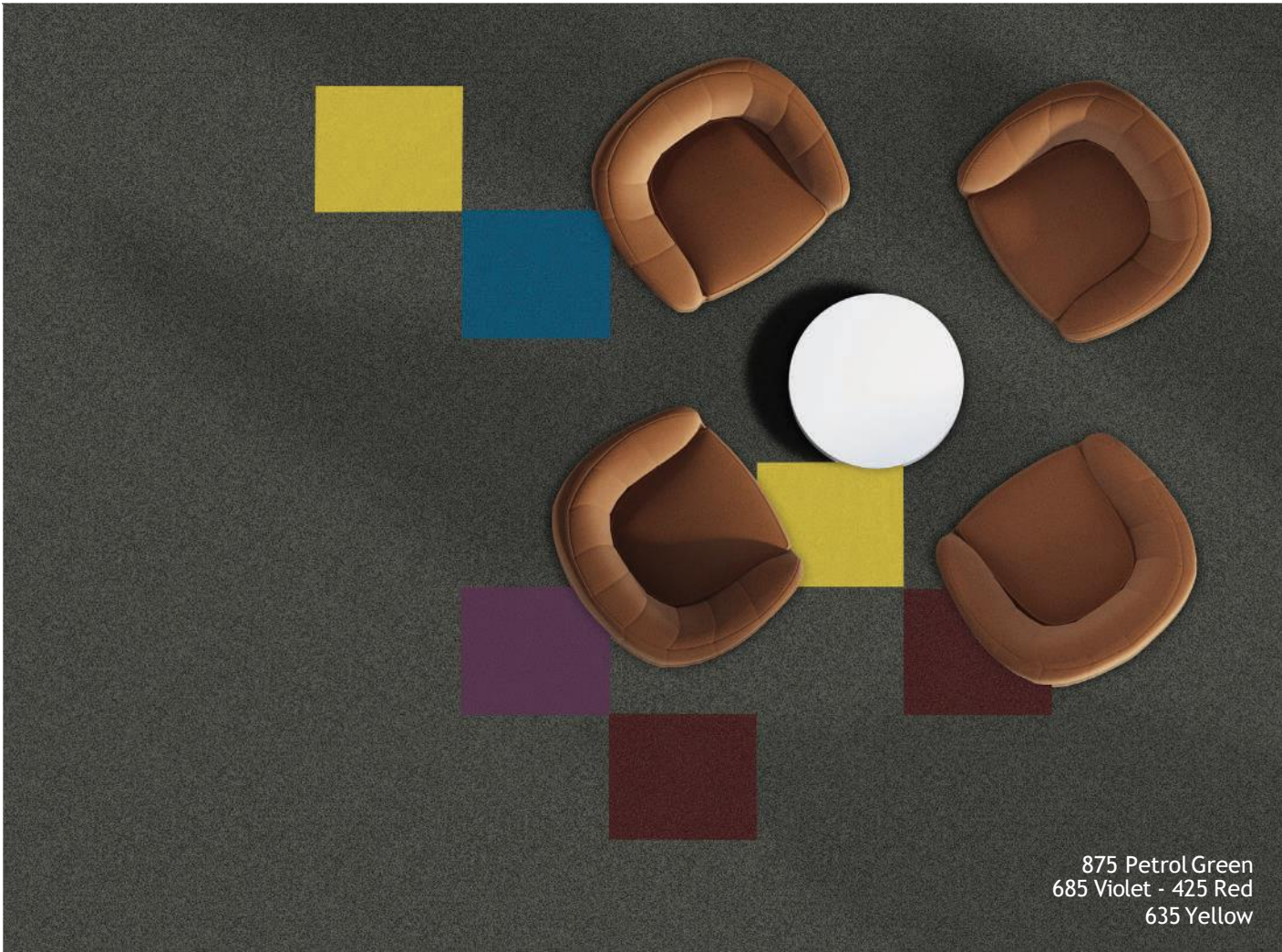
655 Turquoise



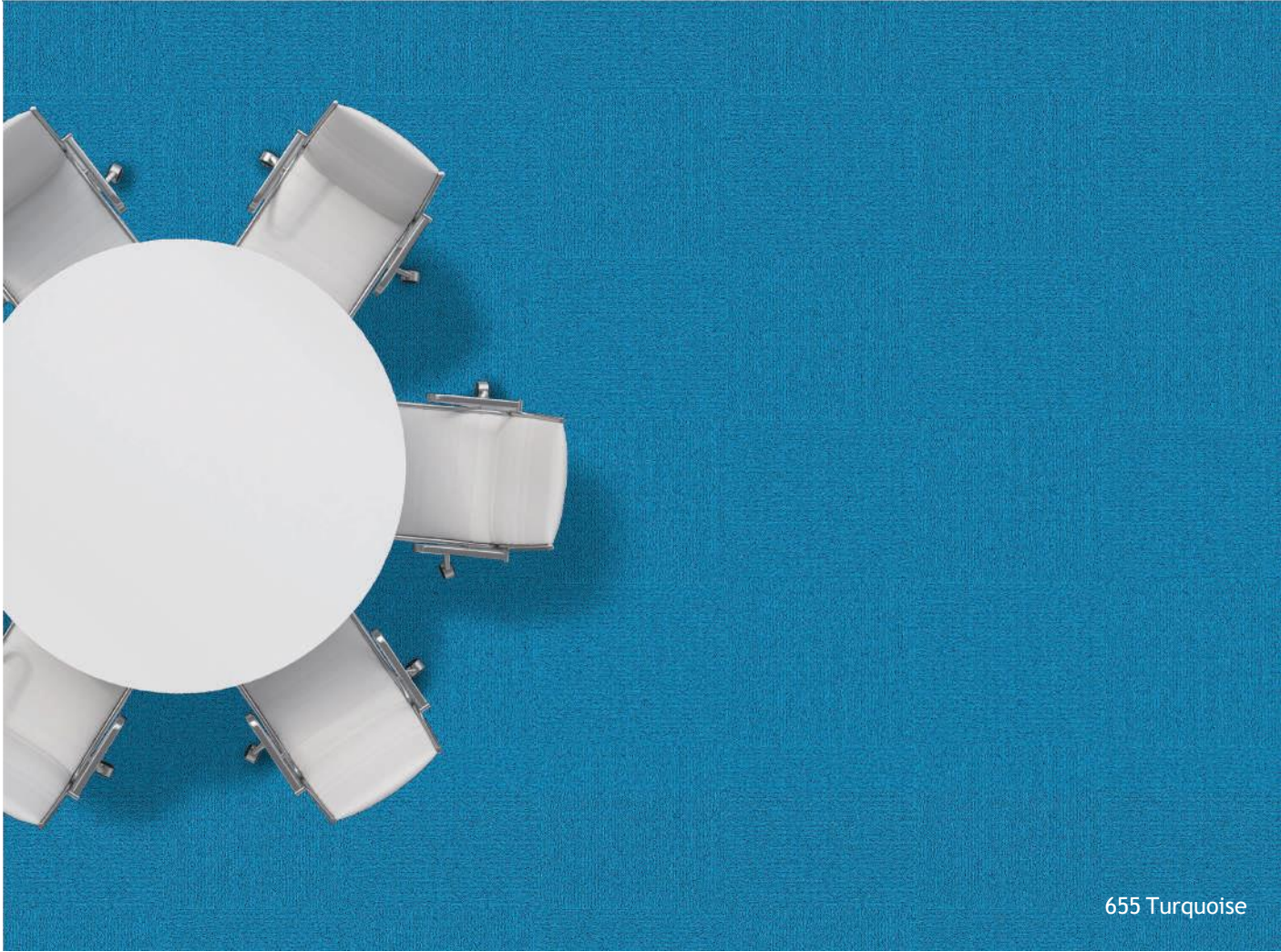
425 Red



225 Rust

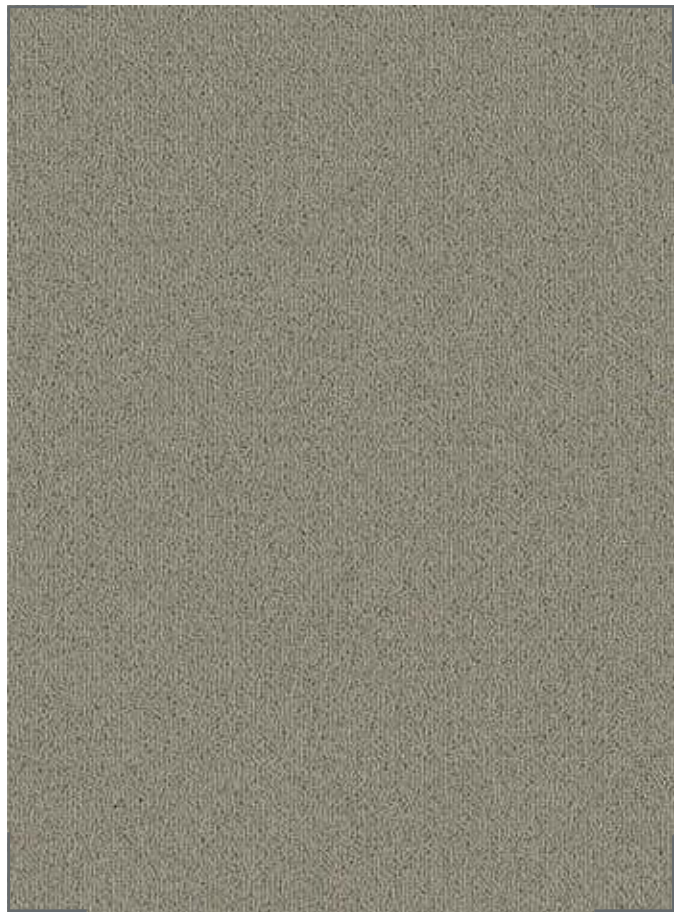


875 Petrol Green
685 Violet - 425 Red
635 Yellow

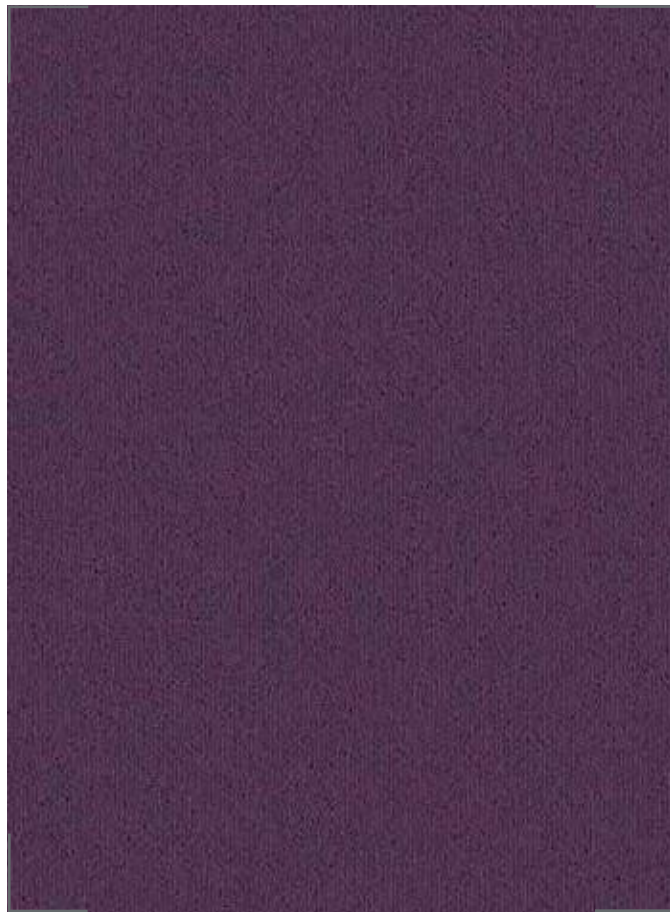


655 Turquoise

BOSTON (Solid Colours)



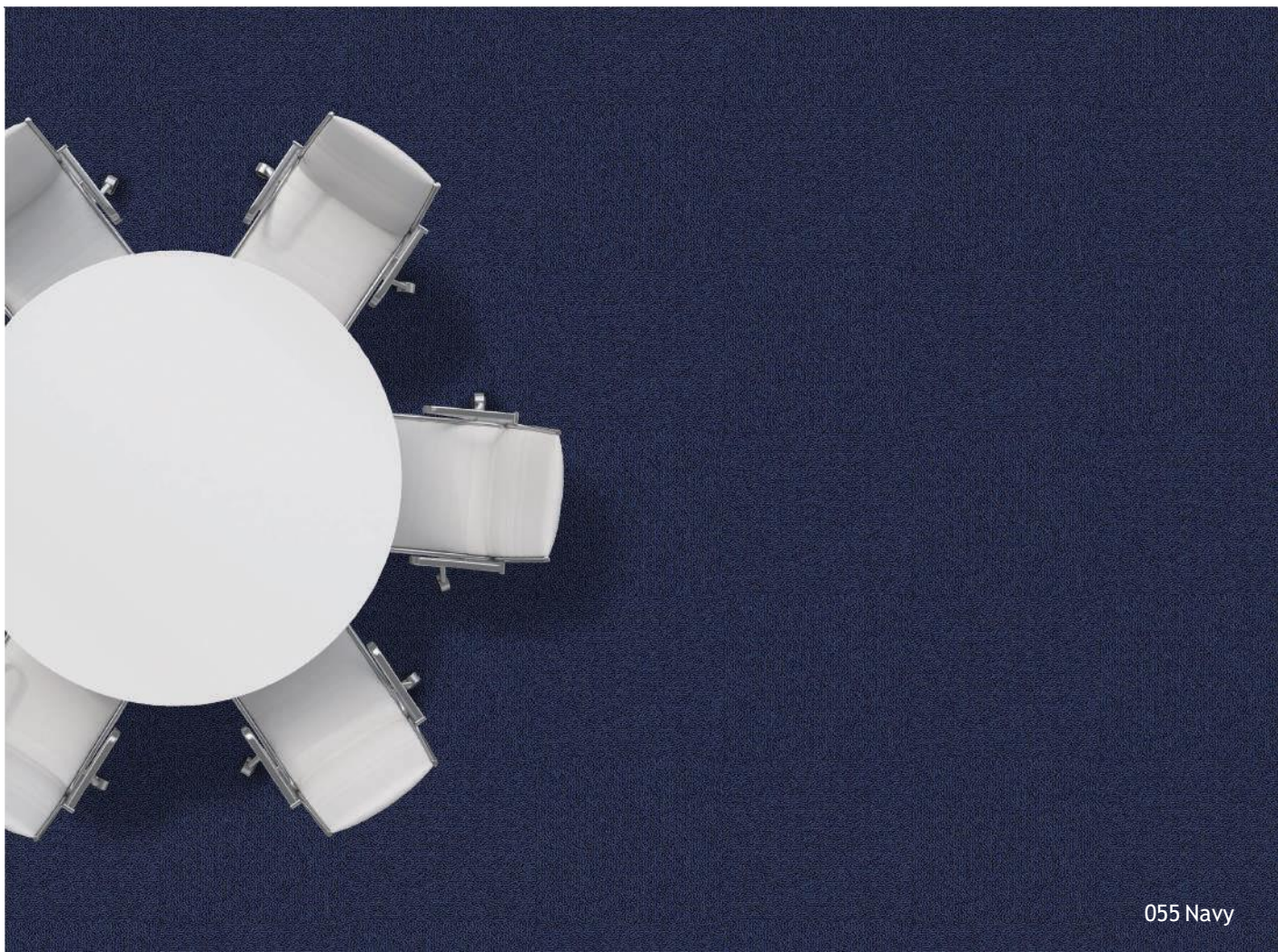
595 Light Beige



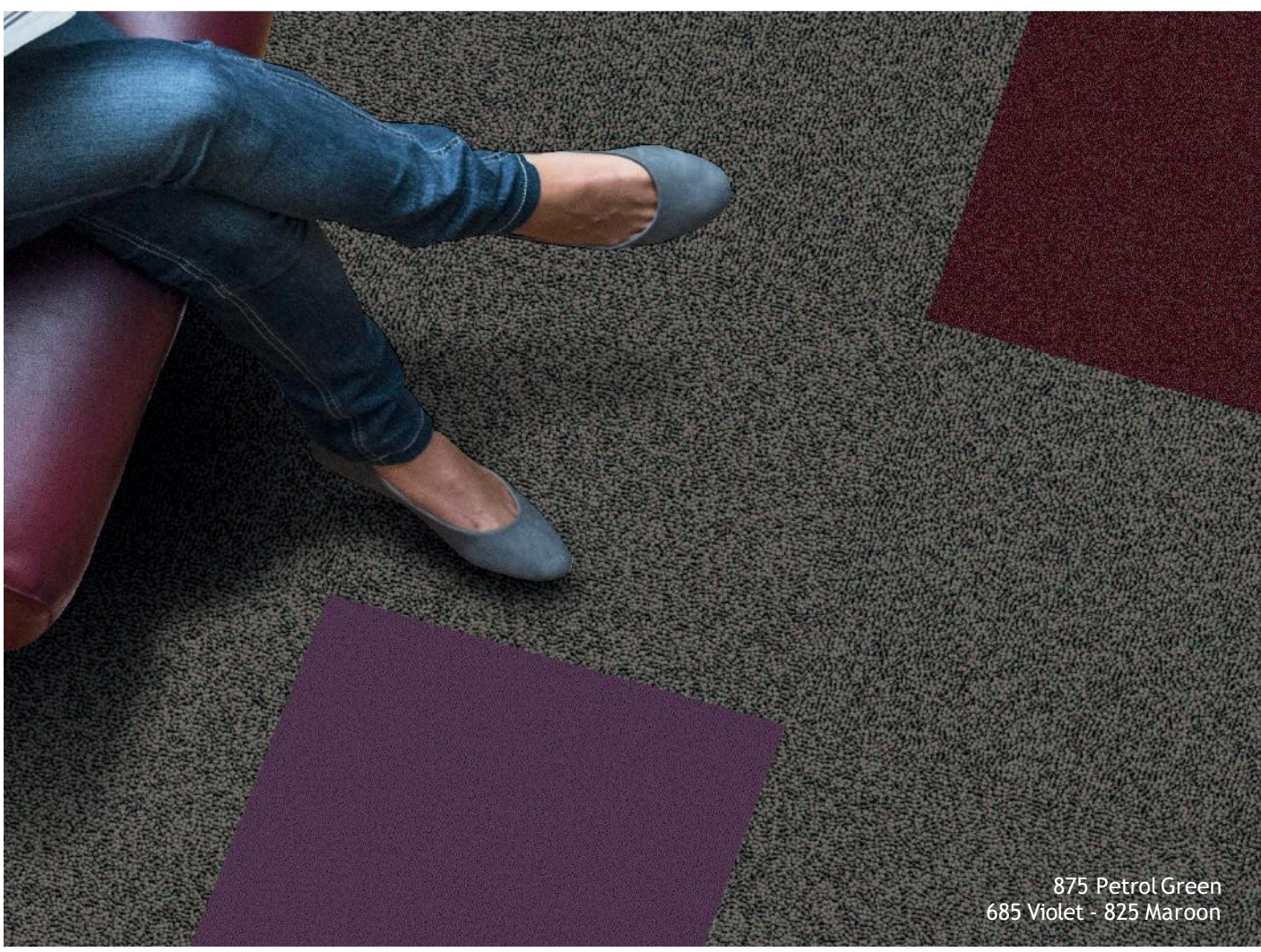
685 Violet



055 Navy



055 Navy



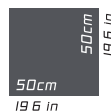
875 Petrol Green
685 Violet - 825 Maroon



875 Petrol Green
685 Violet - 425 Red
635 Yellow - 655 Turquoise

BOSTON

SDN Carpet Tile (50 x 50 cm)



PRODUCT INFORMATION

Construction	LOOP
Style	Boston
Fiber	SDN (Solution Dyed Nylon 6)
Anti-soil Treatment	INVISTA
Pile Weight	550 gm/m ²
Total Weight	4.6 kg/m ²
Gauge	1/10 th
Primary Backing	Non-Woven
Secondary Backing	100% Vinyl StableShield
Tile Size	50 cm x 50 cm
Pile Height	3.0 mm - 4.0 mm
Recommended Installation	Quarter Turn & Brick

TECHNICAL PERFORMANCES

Classification	Commercial / Heavy Contract	Class 33
VOC (Green Label Plus)	ASTM D5116-06	< 0.5 mg/m ² /hour (CRI GLP)
Flammability	ASTM D-2859//FF 1-70//16 CFR 1630	Pass 8/8
Reaction to Fire	ASTM E648-08	Cfl-S1
Static Propensity	ISO 6356	0.2 KV
Color Fastness	AATCC/16	5/5 on Grey Scale
Thermal Resistance	ISO 8302	0.04 m ² /KW
Impact Sound Insulation	ISO 140-8	23 dB
Dimensional Stability	EN 986	< 0.20%
Castor Chair Test	DIN 54324	R ≥ 2.4
Smoke Density	EN ISO 9239-1:2002	< 450

